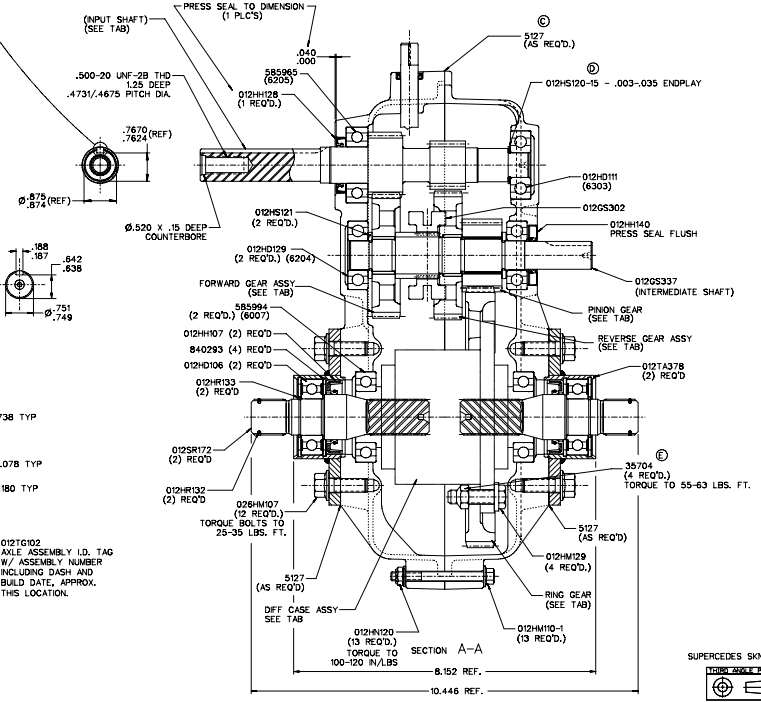
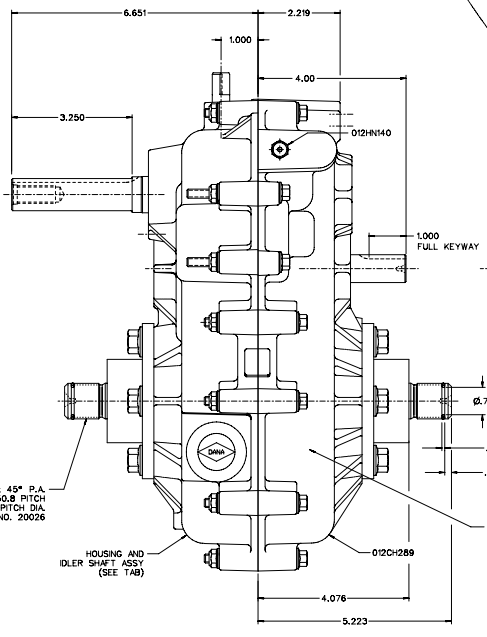
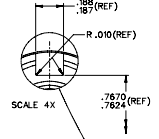
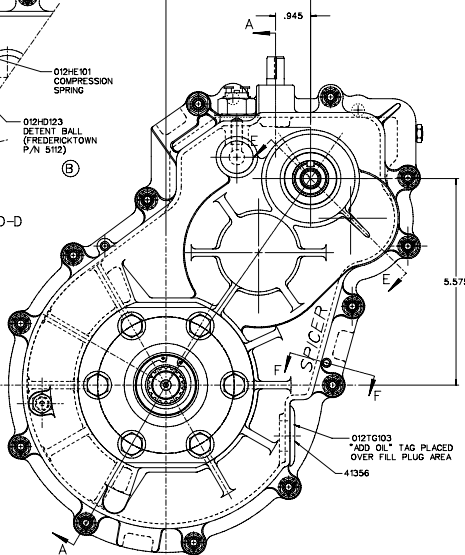
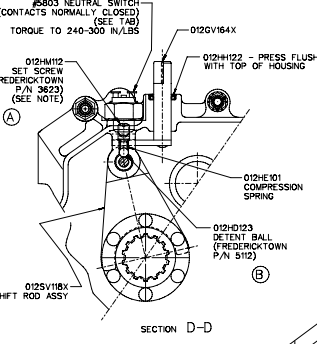
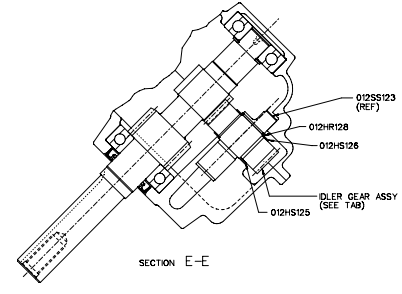
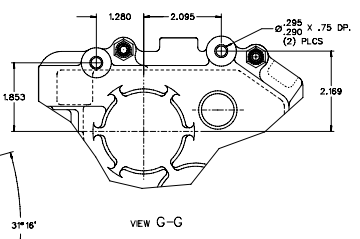
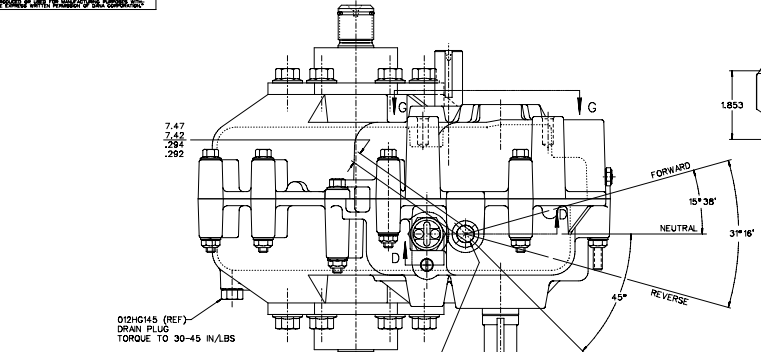


NO.	CHANGED FROM	BY	DATE
MS-283	REL. PRODUCTION	JT	8-2-84
MS-408	1. ADD P/L 512	JT	12-9-85
MS-128	2. M5 BUSHES	MP	3-10-86
MS-288	5. M5 BUSHES, .882-.888	MP	3-10-86
MS-288	E. WAS USHWOR	JT	11-12-86



NOTES:  
 OIL ALL SEALS AT ASSEMBLY.  
 TIGHTEN SET SCREW (012HM12) TO ACHIEVE A SHIFT TORQUE OF 8-14 IN./LBS. ON SHIFT ACTUATOR ASSY.  
 CUSTOMER TO ADD 20-24 FL. OUNCES OF S.A.E. 80-90 WT. OIL.  
 \* DIFF CASE ASSY 012DA123 IS CUSTOMER SUPPLIED, DANA INSTALLED.

REV. 2	MD4-313	MS
012AS109		

012AS109-2	13.25:1	14.36:1	012GS216	012GS216	012GS307	012GS202X	012GS204X	012GS207X	012CH291-2X	012CH291-2X
012AS109-1	13.25:1	14.36:1	012GS215	012GS216	012GS307	012GS202X	012GS204X	012GS207X	012CH291-2X	012DA123 *
PART NO.	RATIO	REV.	PNION GEAR	RING GEAR	INPUT SHAFT	FORWARD GEAR ASSY	REVERSE GEAR ASSY	IDLER GEAR ASSY	HSG & SHAFT ASSEMBLY	DIFF CASE ASSEMBLY

0126HN103	012GD110	012DC122
012DA123-X	012DA123 *	

CAMBER ASSEMBLY				DANA CORPORATION			
REV. 2	MD4-313	MS		REVISIONS	DATE	BY	CHK
012AS109				012AS109			

